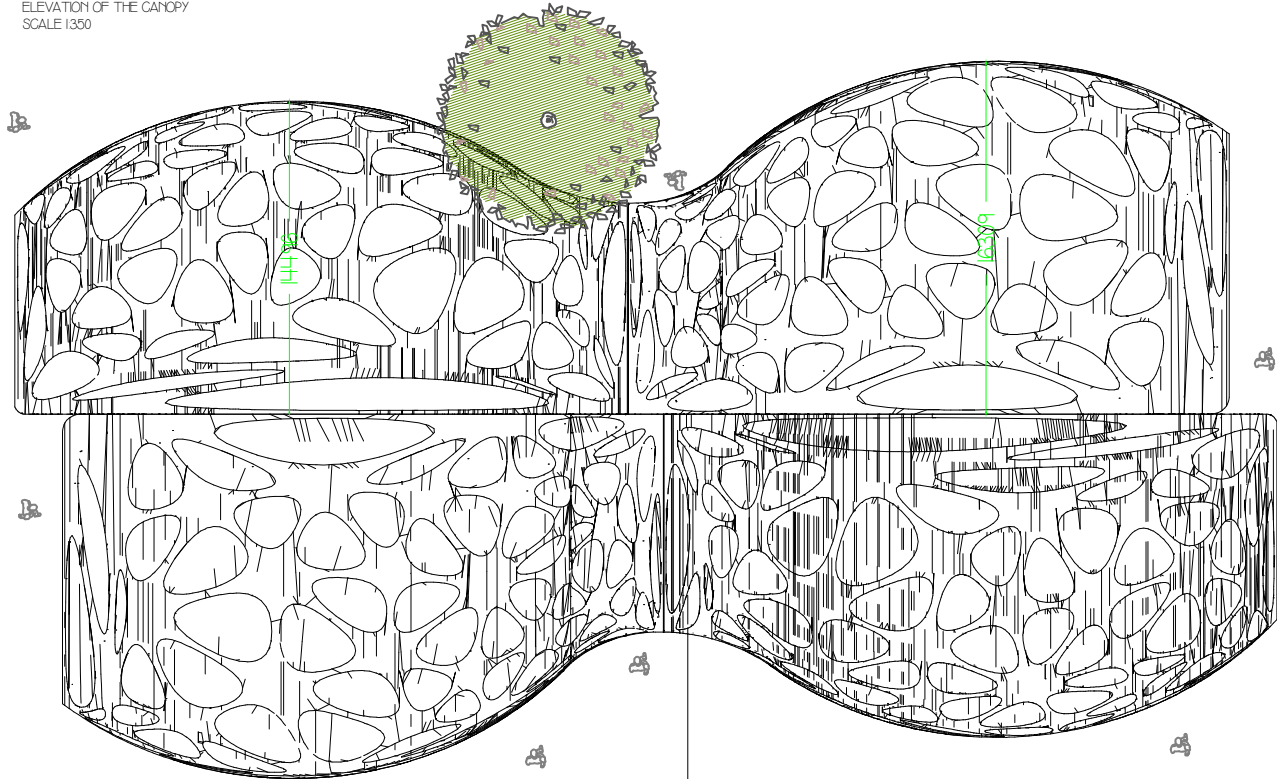
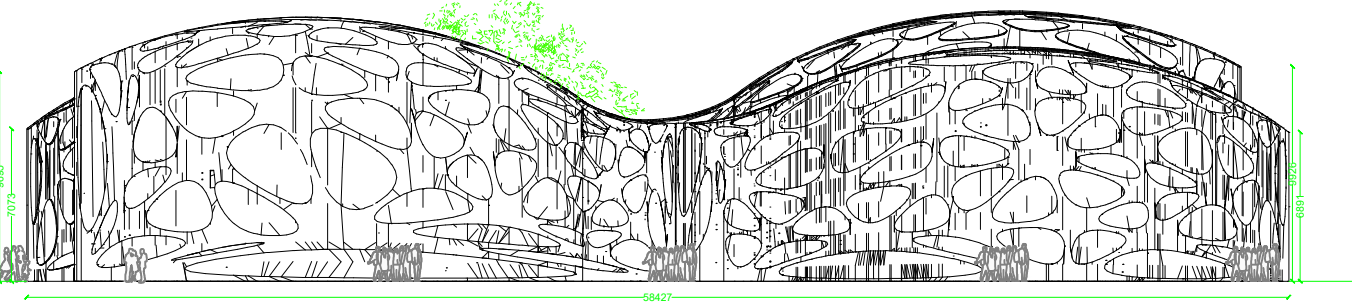


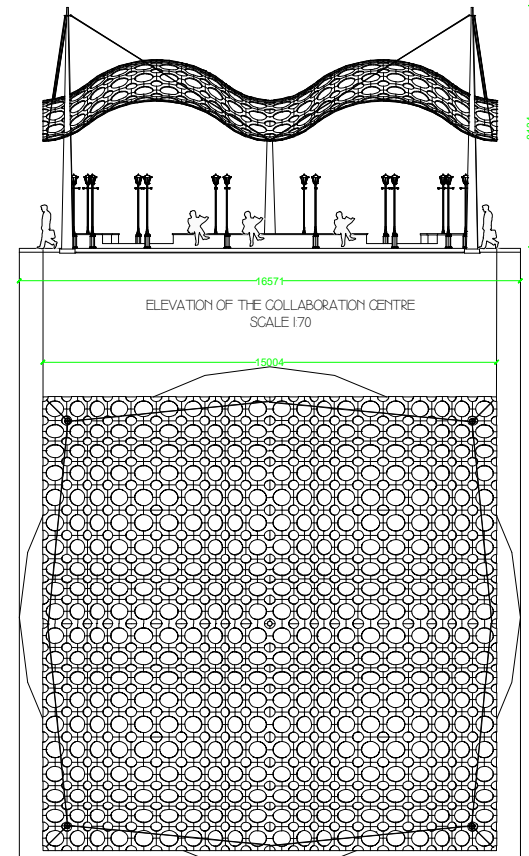
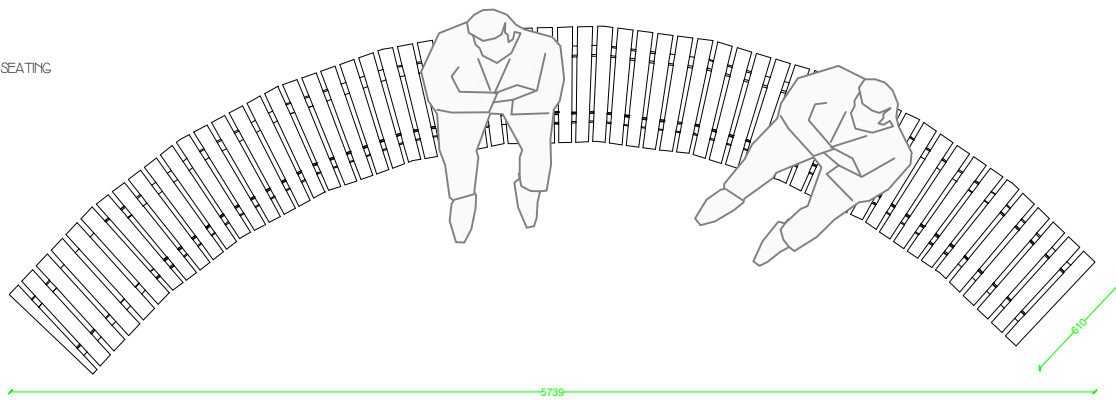
"The pavilion has always served as a space for reverence, enjoyment, pleasure or as a medium for architectural experimentation and polemics."
- The pavilion: Pleasure and Polemics in Architecture

- In this sense pavilion can be termed as in different ways such as:
- Interactive space
 - Interpretative space
 - Public space
 - Agent for promotion

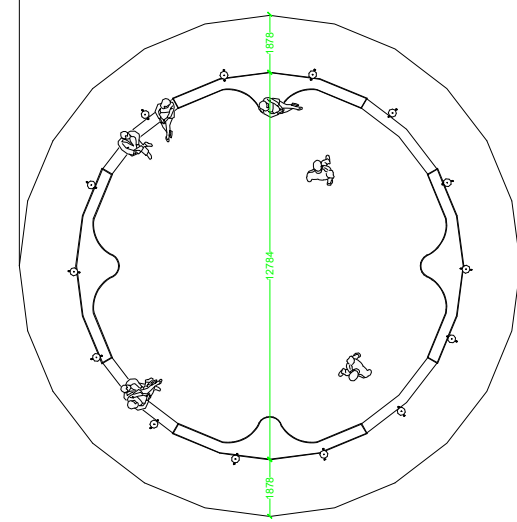


GLASS FIBER REINFORCED CONCRETE OR GFRG IS A TYPE OF FIBER-REINFORCED CONCRETE. THE PRODUCT IS ALSO KNOWN AS GLASSFIBRE REINFORCED CONCRETE OR GRC IN BRITISH ENGLISH. GLASS FIBER CONCRETES ARE MAINLY USED IN EXTERIOR BUILDING FACADE PANELS AND AS ARCHITECTURAL PRECAST CONCRETE. SOMEWHAT SIMILAR MATERIALS ARE FIBER CEMENT BOARD AND CEMENT BOARD.

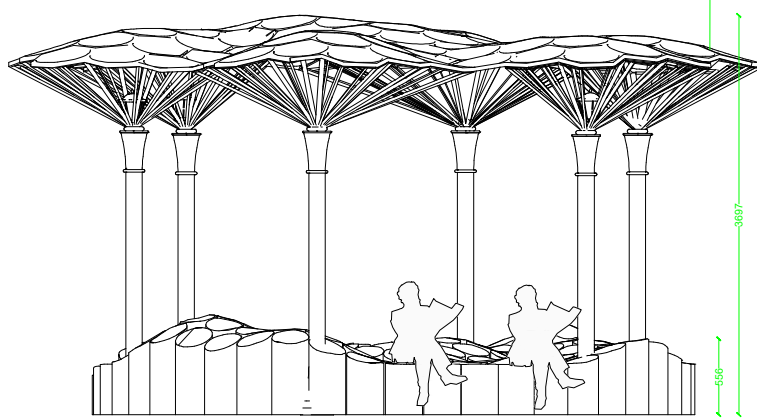
TOP VIEW OF CURVED BENCH FOR SEATING
SCALE 140



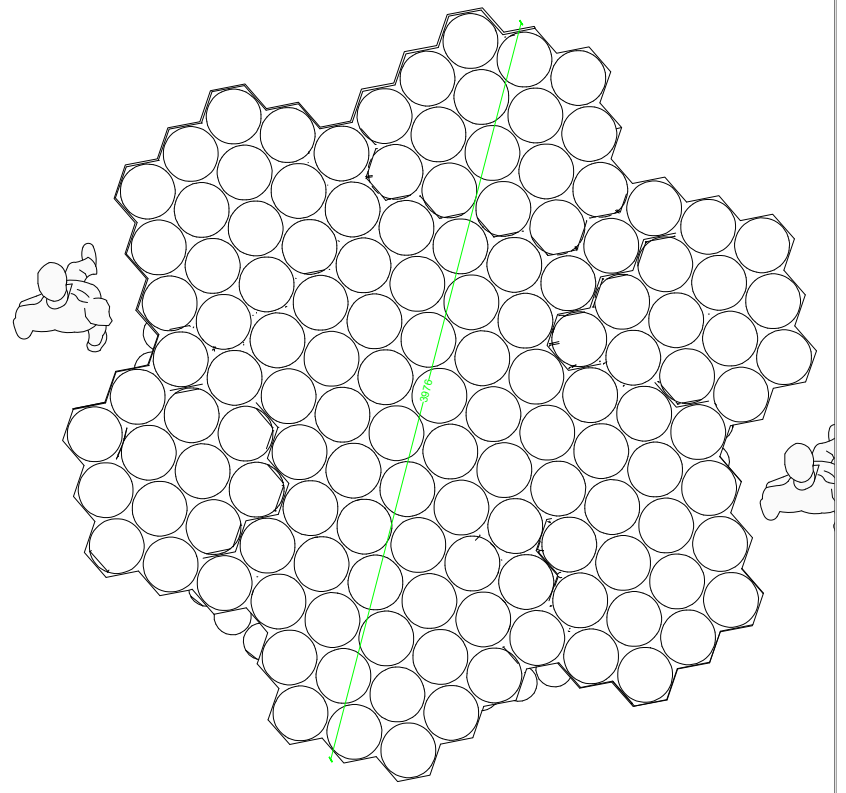
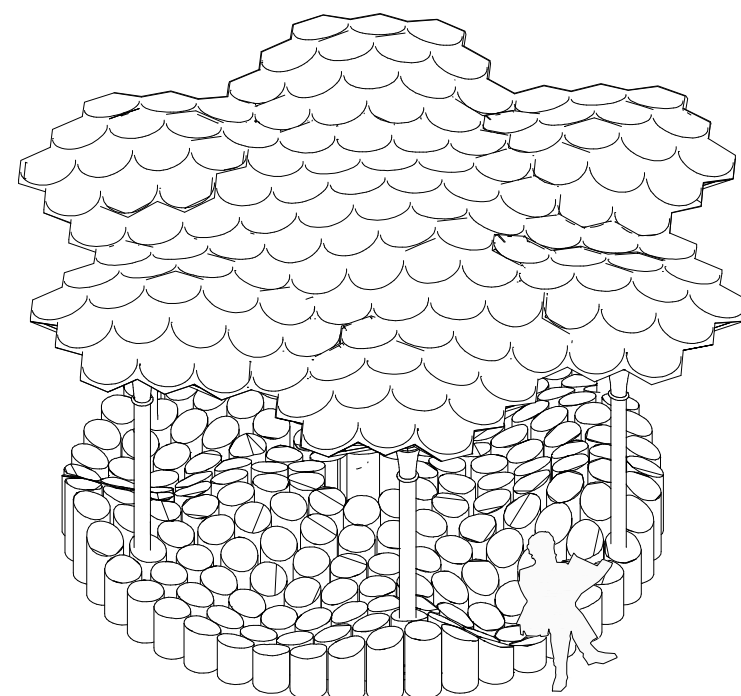
TOP VIEW OF THE COLLABORATION CENTRE
SCALE 1250



- Attributes of Great Public space:
- Promotes human contact and social activities
 - Visually interesting design and architectural features
 - Safe, welcoming and accommodating for all users
 - Promote the community involvement
 - Reflects local culture and history
 - Well maintained
 - Has a unique special character

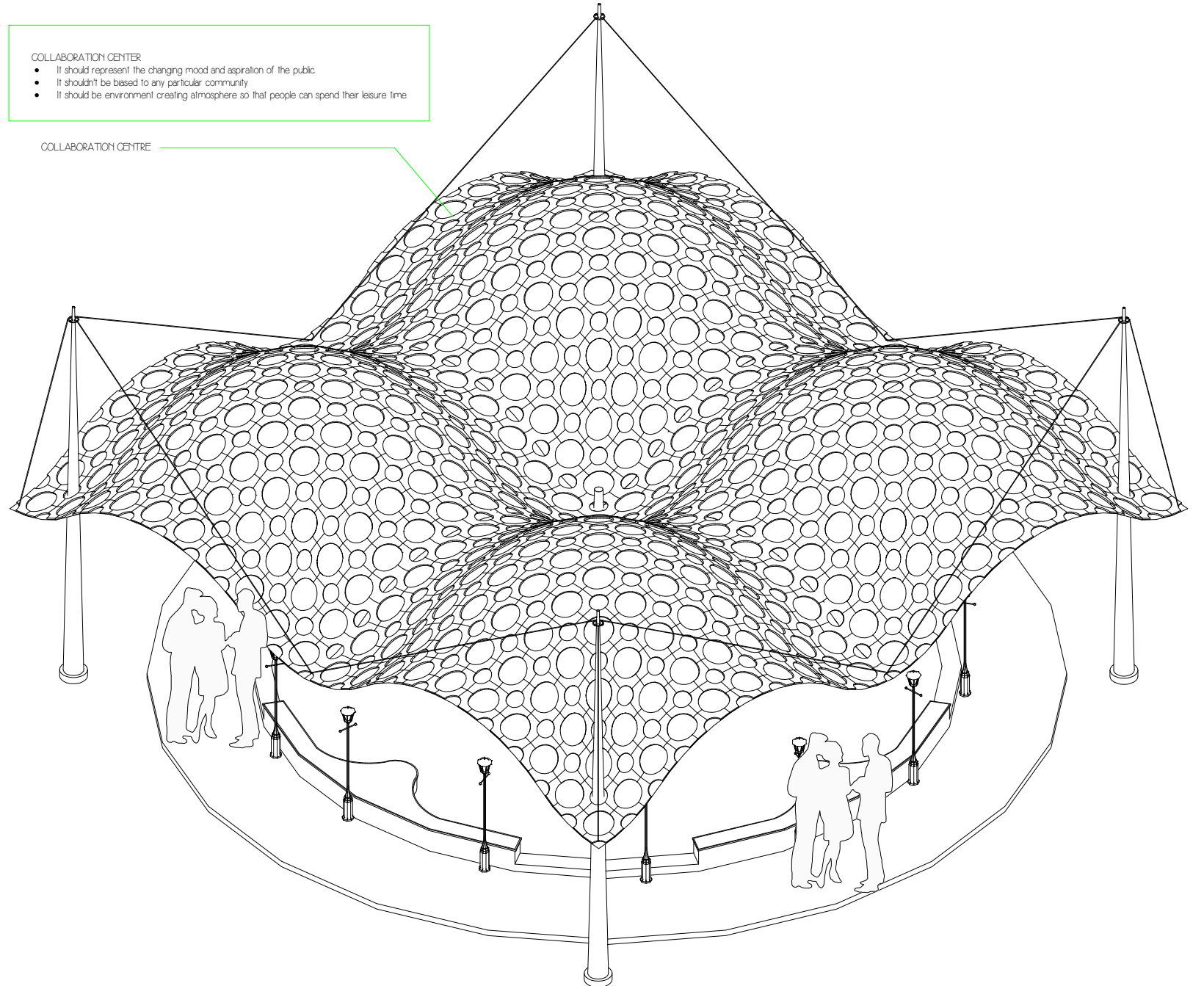


LOG SEATING AREA
SCALE 170



- COLLABORATION CENTRE:
- It should represent the changing mood and operation of the public.
 - It shouldn't be based to any particular community.
 - It should be environment creating atmosphere so that people can spend their leisure time.

COLLABORATION CENTRE



The Pavilion

BEACH ROAD
NEAR GHANDHI STATUE

FURNITURE AND CANOPY DETAILS

BY:
ZUZER UDAPURWALA

ICAT
Design & Media College

DATE :
22/03/18

02