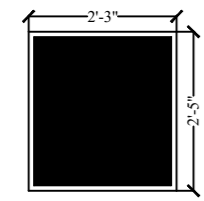
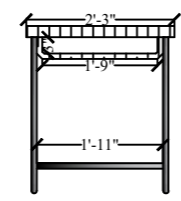


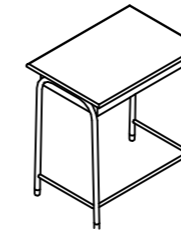
NOTES:
ALL THE UNITS ARE IN FEET & INCHES
TOTAL SITE AREA : 16000 SQ.FT
BUILT UP AREA: 10000 SQ.FT



Top View



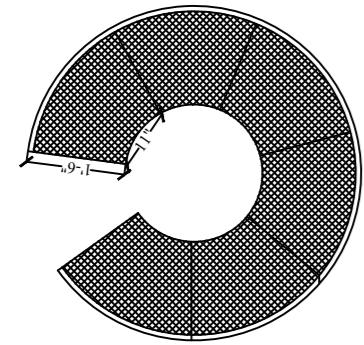
Front View



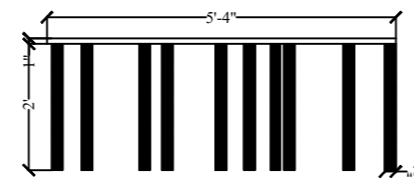
Isometric view

TEACHER TABLE

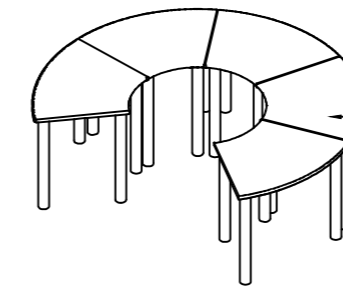
The table is made up of ply wood with laminated of 2'3" x 2'5". The plywood is supported with 304 grade Stainless Steel legs



Top View



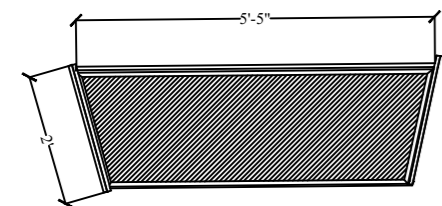
Front View



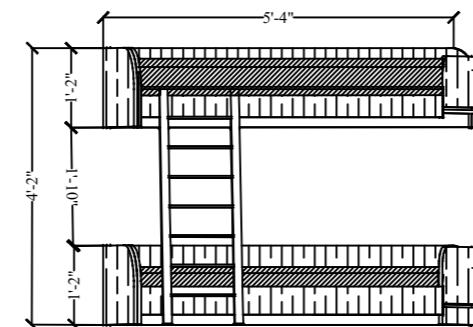
Isometric view

KIDS TABLE

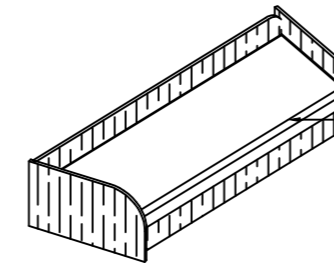
The table is made up of ply wood with yellow laminate. There are 10 units. Each unit is in a sector shape with inner arch of 1'1" and outer arch of 2'6". each unit is supported by 4 wooden legs



Top View



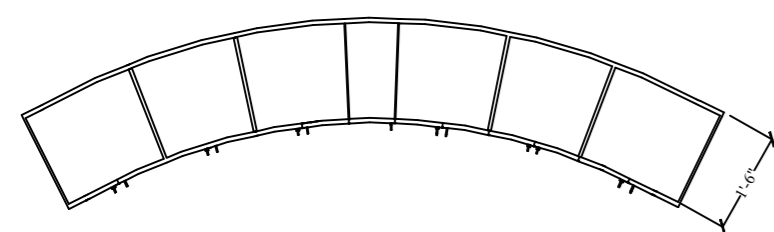
Front View



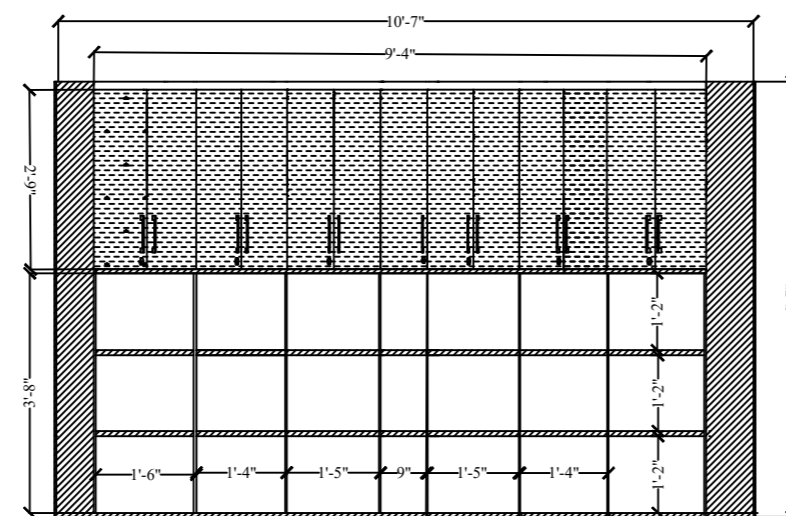
Isometric view

KIDS BED

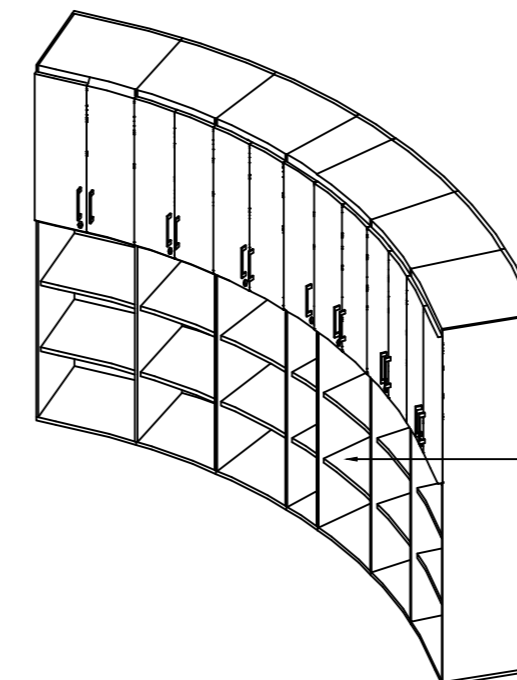
The bed is in trapezium with a width of 2' and length 5'. double bed place at 3'6" from floor.



Top View



Front View



Isometric view

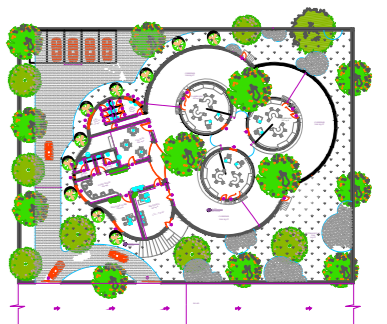
STORAGE

The storage unit has shutter cupboards at the top for storing kids work sheets, documents etc. And the lower shelves is designed for the kids to store their toys

LEGEND:

NO	HATCHES	MATERIALS
1		DUCO PAINTS
2		STORAGE WOOD
3		WOOD
4		LAMINATE

KEY PLAN:



PROJECT NAME:

Play School Design

CLIENT NAME:

POD Play School

DRAWING NAME:

FURNITURE\INTERIOR DETAILS

NAME:

Yusuf. Aliasgar. Sadriwala

DATE:

23/04/2019

SCALE

1 : 100

SHEET NUMBER:

07