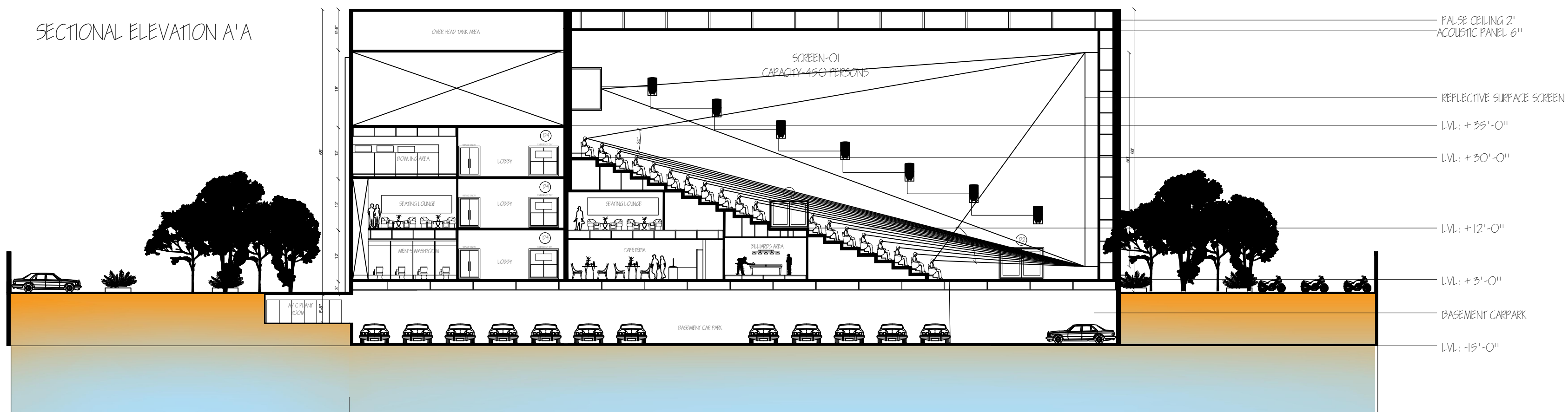
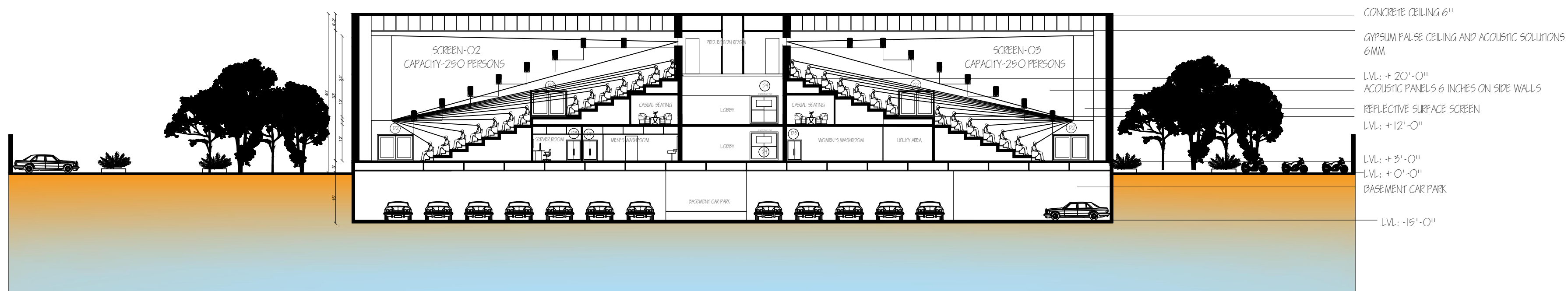


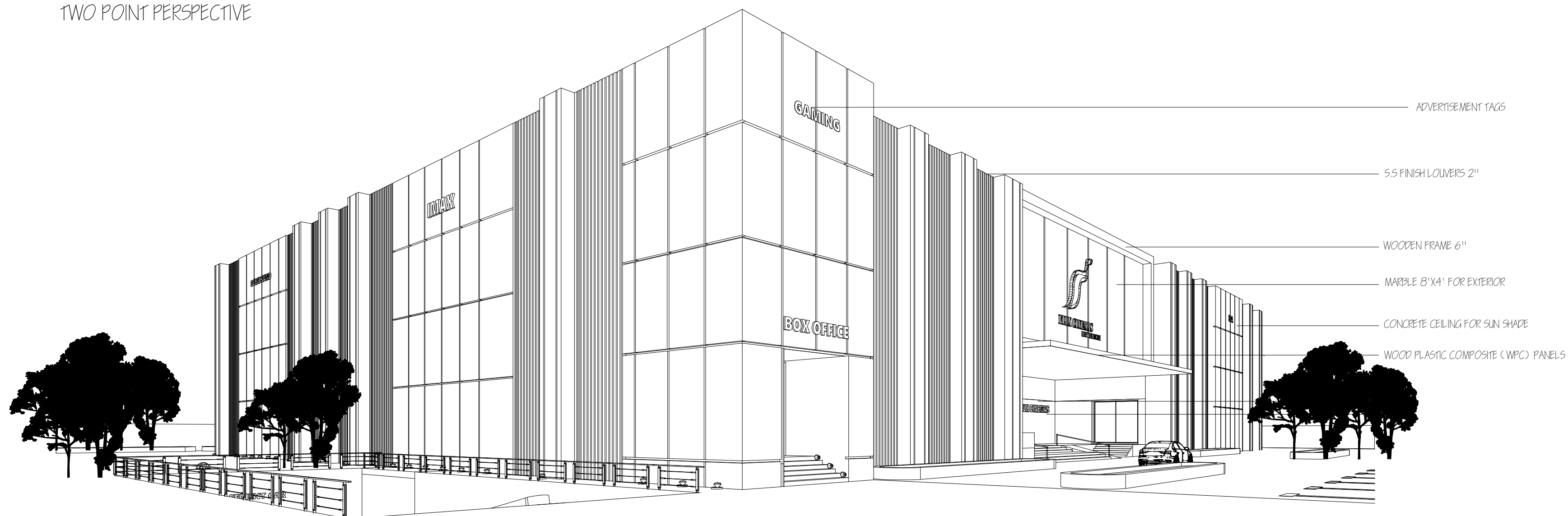
SECTIONAL ELEVATION A'A



SECTIONAL ELEVATION B'B



TWO POINT PERSPECTIVE



NOTES:

ALL THE DIMENSIONS IN THIS SHEET ARE IN FEET & INCHES
BASEMENT AT 15' FEET HEIGHT FROM FINISHED FLOOR LEVEL (FPL)

CEILING HEIGHT - 12'-0"
SLAB THICKNESS - 6"
PLINTH THICKNESS - 3'

SITE DIMENSIONS: 330'-0"X390'-0"
SITE AREA: 1,29,000 SQFT.

LEGEND:

150 CAR CAN BE PARKED IN THE BASEMENT ACCORDING TO THE STANDARDS AND THE AREA GIVEN WHICH INCLUDES THREE ENTRY AND EXIT GATES FOR EASY CROWD DISTRIBUTION.

GROUND FLOOR HEIGHT FROM FPL 12'-0"
FIRST FLOOR HEIGHT FROM FPL 12'-0"
SECOND FLOOR HEIGHT FROM FPL 12'-0"

PLINTH AT 3' FROM GROUND LEVEL

BASEMENT DECLINE RAMP FROM GROUND TO BASE 12'-0"

OVER HEAD WATER TANK 50'-0"

PROJECT NAME:

MULTIPLEX DESIGN

CLIENT NAME:

FLUX CINEMAS

DRAWING NAME:

SECTIONS & ELEVATION

NAME:

HUZEFA KAPI

DATE:

21/03/19

SCALE:

1:250

SHEET NUMBER:

04